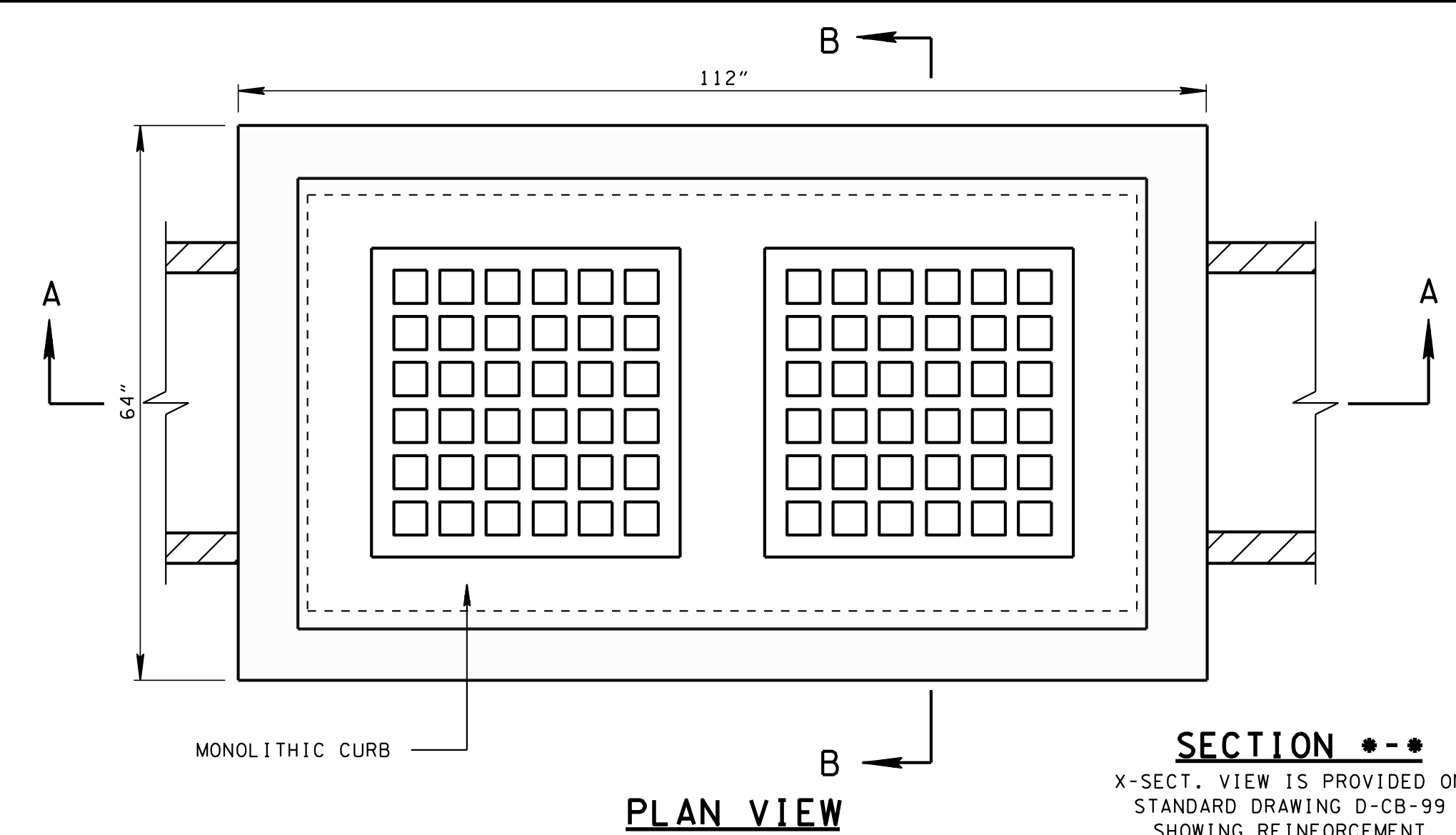
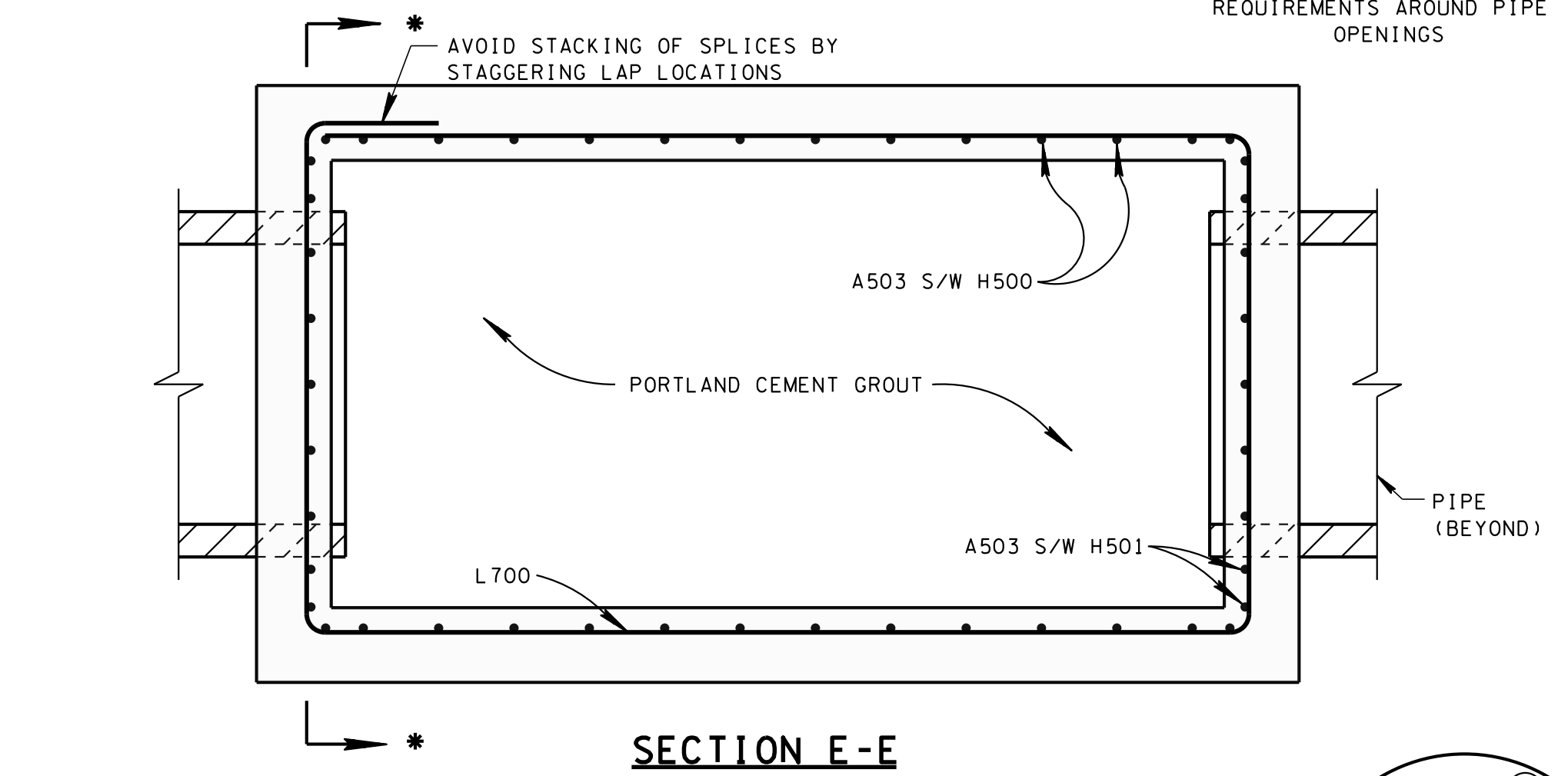


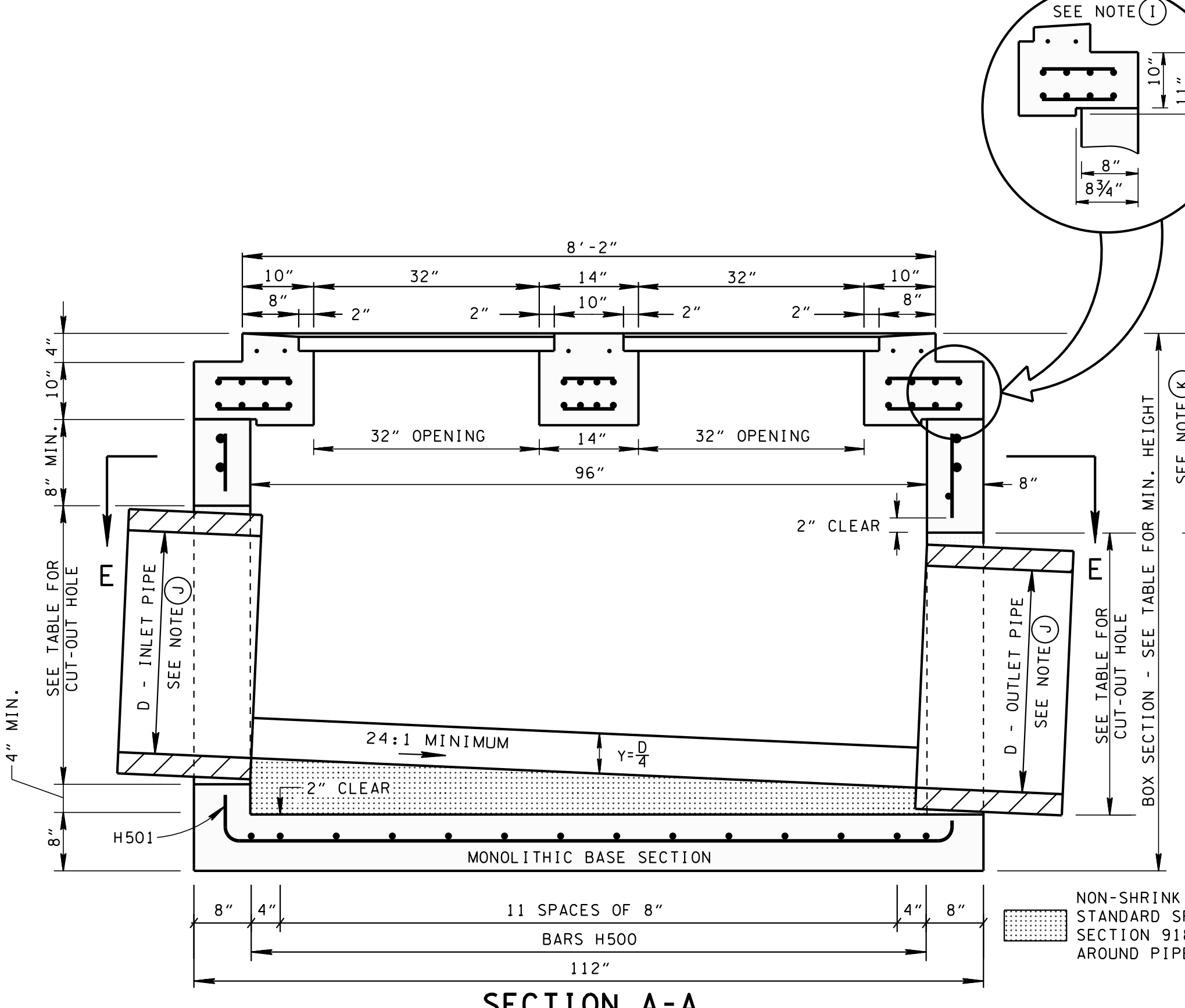
22-APR-2014 09:51  
\\J0009083\F03\tdot.state.tn.us\j00658\backup d\pak on J196208\WORKSTD\2014 std dwg\UCB43SB\_03\14.dgn



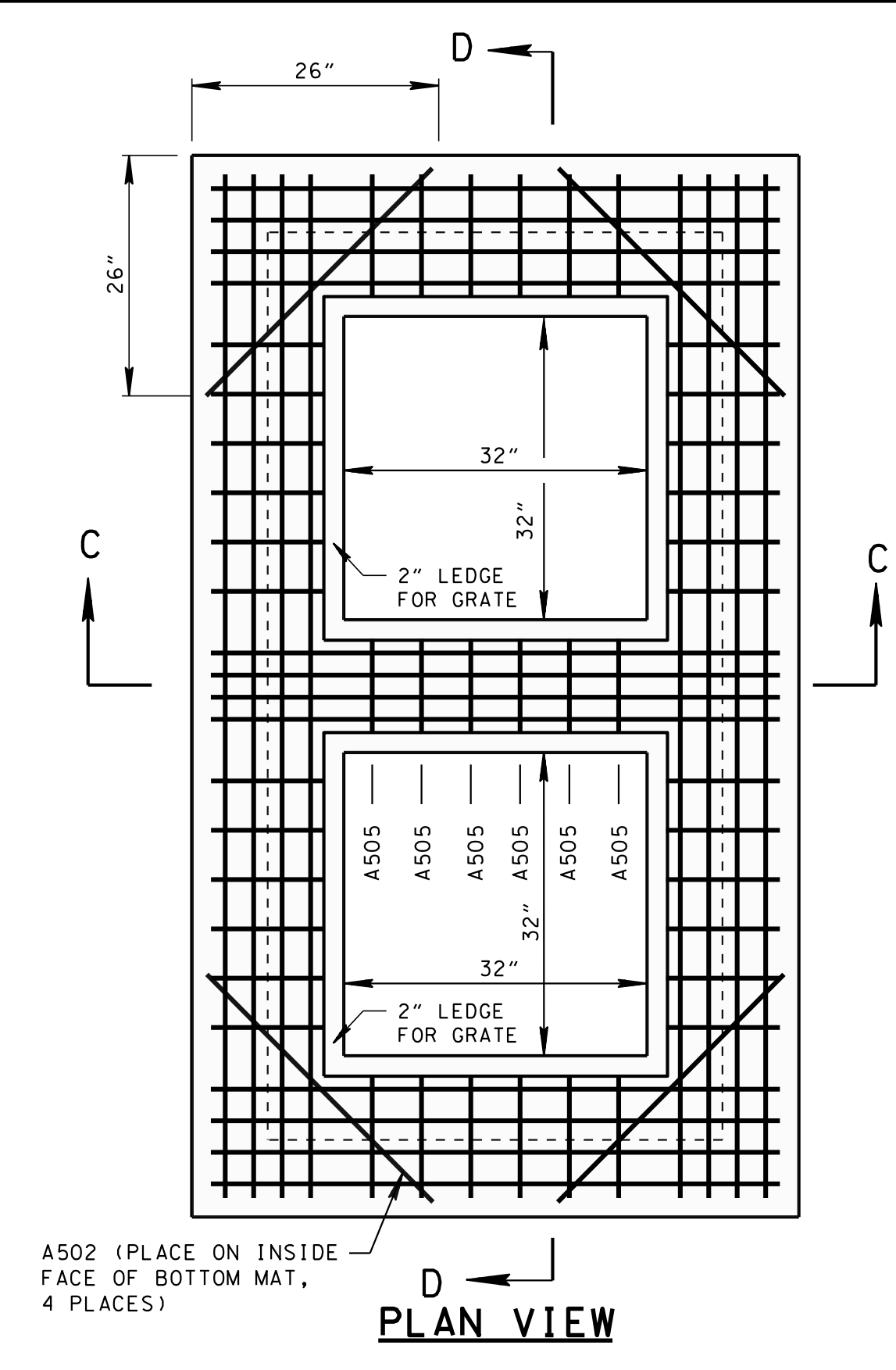
PLAN VIEW



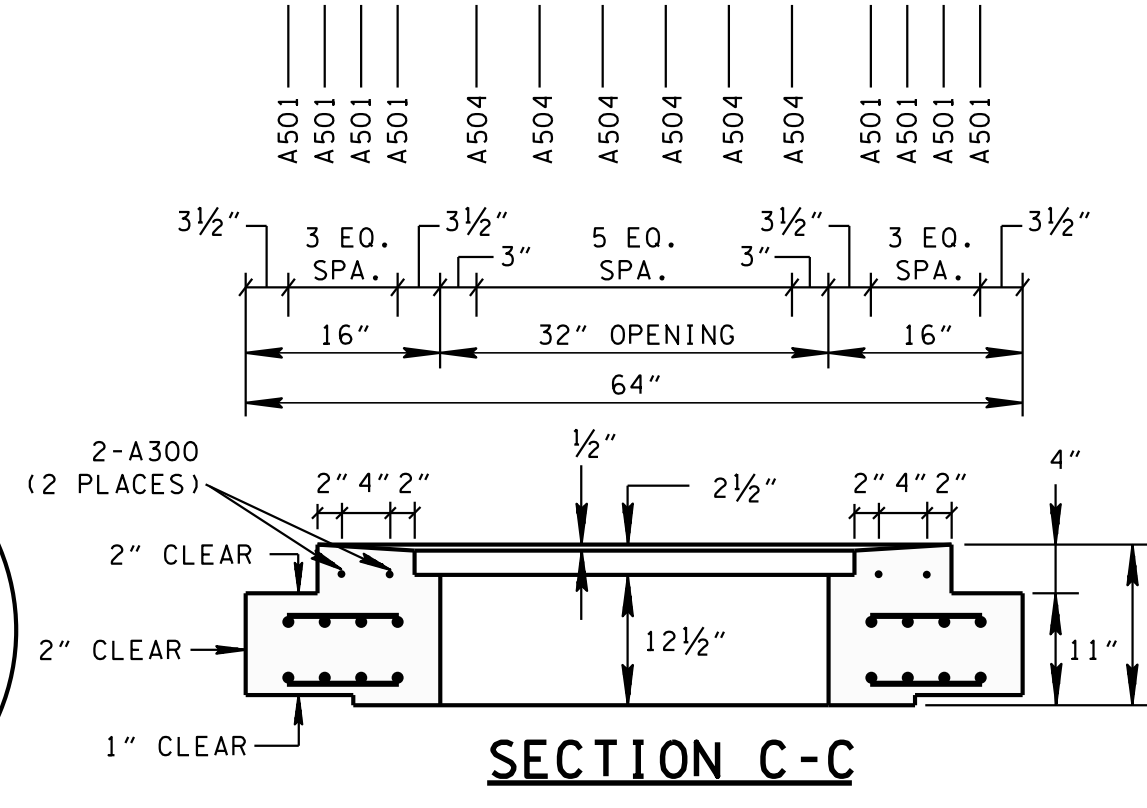
SECTION E-E



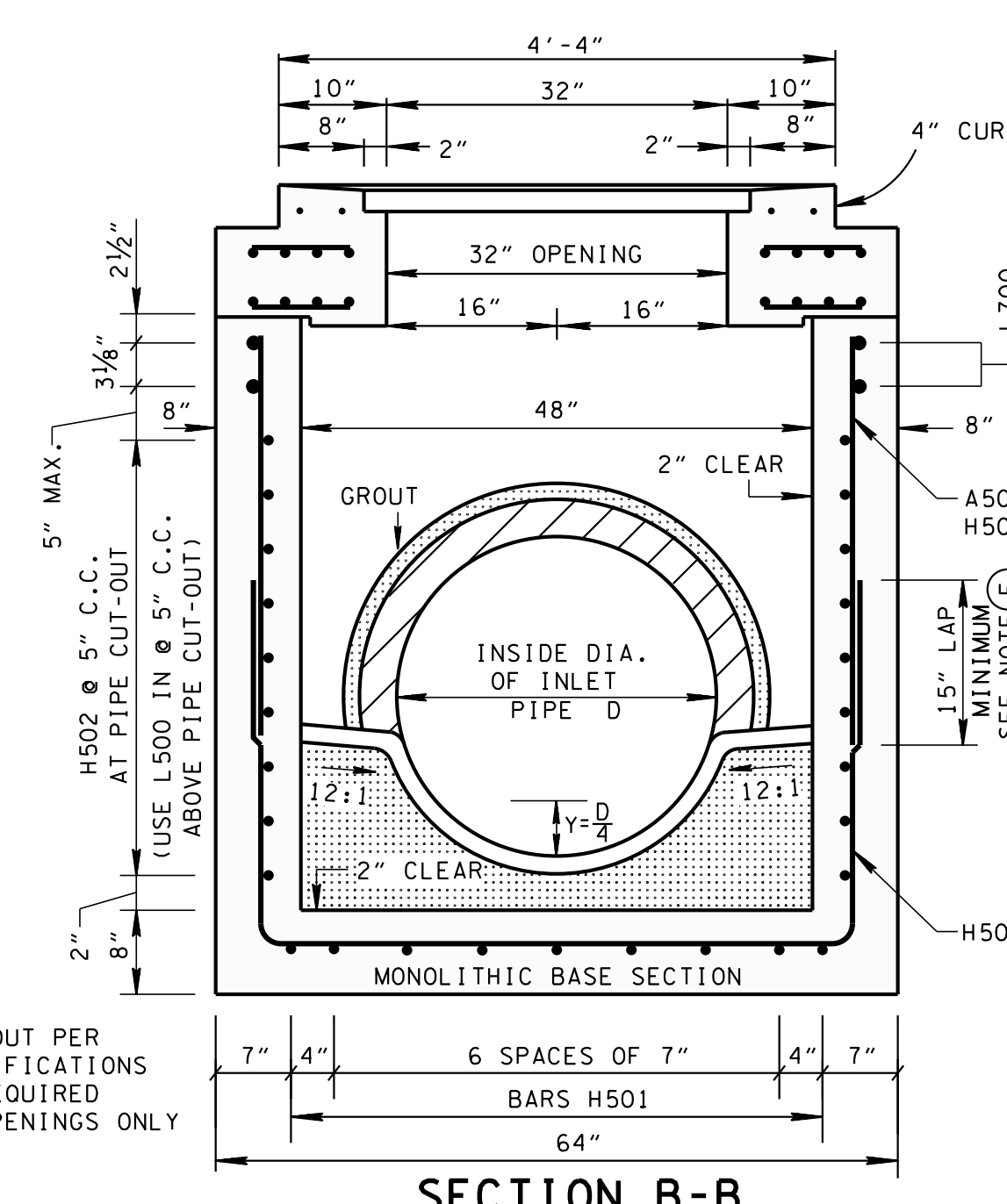
SECTION A-A



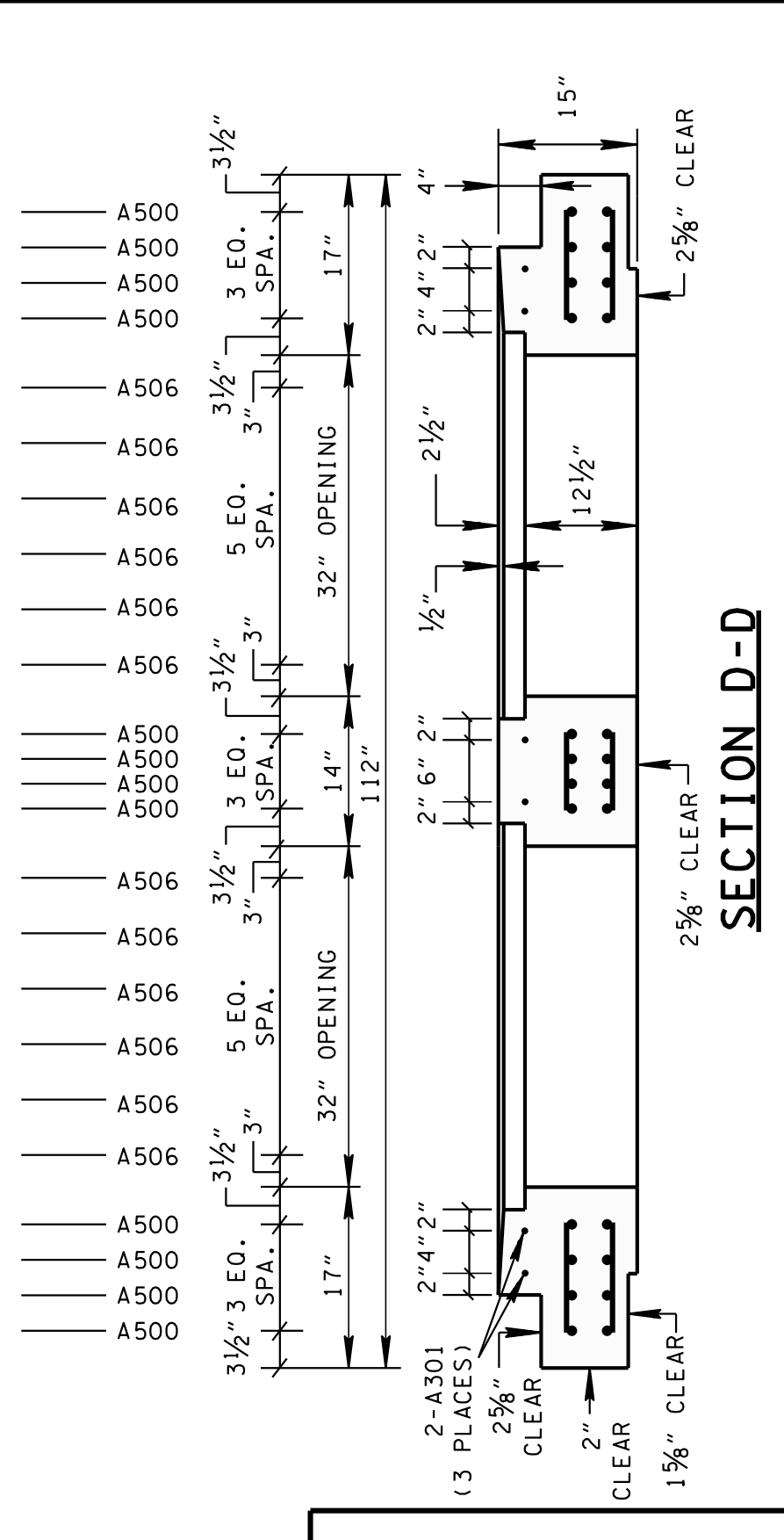
PLAN VIEW



SECTION C-C



SECTION B-B



SECTION D-D

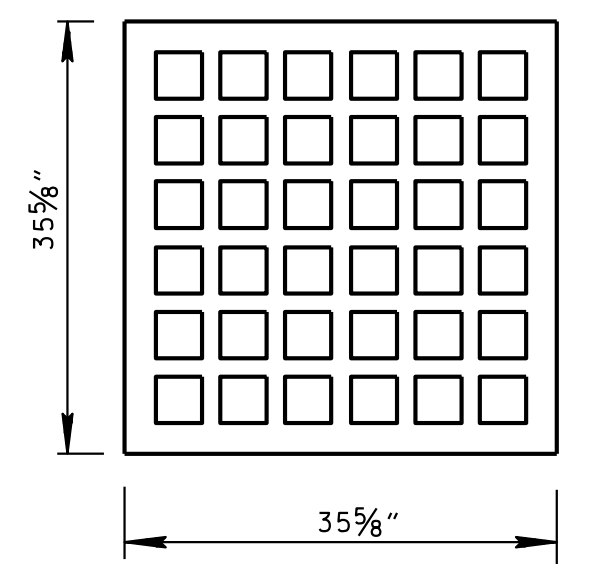
**CATCH BASIN MAXIMUM DEPTH NOTE**  
MAXIMUM DEPTH FOR THIS STRUCTURE IS 20.00'.

CATCH BASIN DIMENSIONS				FOR DESIGN USE ONLY
INSIDE DIAMETER (D) OF PIPE (INCHES)	PIPE WALL THICKNESS (INCHES)	DIAMETER OF CUT-OUT HOLES (INCHES)	BOX SECTION MINIMUM HEIGHTS (INCHES)	CATCH BASIN MINIMUM DESIGN DEPTH (FEET)
18	2 1/2	25	57	3.88
24	3	32	64	4.42
30	3 1/2	39	71	4.97
36	4	46	78	5.51
④ 42	4 1/2	53	85	6.05
④ 48	5	60	92	6.59
④ 54	5 1/2	67	99	7.13
④ 60	6	74	106	7.67

- CUT-OUT HOLES BASED ON REINFORCED CONCRETE PIPE WITH WALL TYPE "B".
- ALL FLEXIBLE PIPE MATERIALS REQUIRE GASKET. SEE STANDARD DRAWING D-PB-2.
- CUT-OUT HOLES FOR PRECAST STRUCTURES TO BE FORMED IN ORDER TO OBTAIN A SMOOTH EDGED HOLE. SCORED OR ETCHED HOLES WITH REINFORCING STEEL LEFT UN CUT WILL NOT BE PERMITTED.
- TO BE USED IN 96 INCH INTERIOR WALL ONLY.

- REV. 5-27-01: CHANGED PAY ITEMS IN GENERAL NOTE ① ADDED CATCH BASIN MAXIMUM DEPTH NOTE.
- REV. 7-29-02: CHANGED ASTM SPECIFICATION IN GENERAL NOTE ②
- REV. 8-01-12: REVISED CATCH BASIN FOR COMPLIANCE WITH AASHTO LRFD BRIDGE DESIGN SPECIFICATIONS, 4TH EDITION WITH INTERIMS. REVISED REINFORCING, GENERAL NOTES, LEGEND AND ADDITIONAL MISC. DRAFTING EDITS.

- REV. 9-24-12: MODIFIED TOP SLAB AND MINIMUM DEPTH.
- REV. 3-11-14: ELIMINATED STIRRUPS.



**GRATE UNIT NO. 43**  
(SEE STD. DWG. D-CBB-42 FOR GRATE DETAILS)

MINOR REVISION -- FHWA APPROVAL NOT REQUIRED.

**GENERAL NOTES**

- DRAWING TO BE USED FOR ALL CAST-IN-PLACE NO. 43SB CONCRETE CATCH BASINS AND ALL PRECAST NO. 43SB CONCRETE CATCH BASINS. SEE STANDARD DRAWING D-CB-99 FOR ADDITIONAL CONSTRUCTION NOTES & DETAILS.
- THIS DRAWING DEPICTS THE MINIMUM HORIZONTAL REINFORCING AT THE TOP OF CATCH BASIN WALLS. SEE ADDITIONAL DETAILS ON STANDARD DRAWING D-CB-99 FOR TALLER SECTIONS AND STEEL PLACEMENT ABOVE PIPE OPENINGS.
- CAST-IN-PLACE CONCRETE CATCH BASINS SHALL BE CONSTRUCTED IN ACCORDANCE WITH STANDARD SPECIFICATIONS, SECTION 611 AND/OR SPECIAL PROVISIONS UNLESS SUPERSEDED BY THIS DRAWING. THE CONTRACTOR MAY WITH PERMISSION FROM THE ENGINEER SUBSTITUTE PRECAST CATCH BASINS FOR CAST-IN-PLACE CATCH BASINS PROVIDED THAT ALL PRECAST ELEMENTS MEET ASTM C913 (CURRENT EDITION) UNLESS SUPERSEDED BY THIS DRAWING.
- THE FOLLOWING MATERIAL PROPERTIES ARE REQUIRED FOR BOTH CAST-IN-PLACE AND PRECAST STRUCTURES:  
CONCRETE:  $f'_c = 4,000$  POUNDS PER SQUARE INCH AT 28 DAYS  
REINFORCING STEEL: ASTM A615,  $F_y = 60,000$  POUNDS PER SQUARE INCH  
ALL REINFORCING IS TO BE INSTALLED AS DETAILED ON THIS DRAWING.
- PRECAST CATCH BASIN UNITS WHICH ARE DAMAGED DURING SHIPMENT OR INSTALLATION WILL BE REJECTED. IT SHALL BE THE RESPONSIBILITY OF THE CONTRACTOR TO REPLACE DAMAGED CATCH BASIN UNITS AT HIS OWN EXPENSE.
- THE CONTRACTOR MAY ELIMINATE THE A503 BARS BY LENGTHENING THE VERTICAL LEG OF THE H500/H501 BARS SO THAT 1 1/2 INCHES OF CLEAR COVER IS PROVIDED AT THE TOP OF THE STRUCTURE.
- APPROPRIATE SIZING AND LOCATION OF LIFTING DEVICES SHALL BE THE RESPONSIBILITY OF THE FABRICATOR.
- THE CONTRACTOR IS TO PATCH ALL LIFTING DEVICE HOLES WITH GROUT AND PLACE A MINIMUM OF ONE (1) INCH OF COVER OVER THE HARDWARE OF THESE DEVICES ON BOTH TOP AND BOTTOM SURFACES.
- ALTERNATIVE JOINT DETAILS MAY BE ACCEPTABLE. SEE STANDARD DRAWING D-CB-99 FOR ADDITIONAL DETAILS.
- SEE ROADWAY PLANS DRAINAGE TABULATION FOR PIPE INLET AND OUTLET ELEVATIONS. IF NEEDED, INVERT ELEVATIONS MAY BE ADJUSTED AS DIRECTED BY THE ENGINEER IN ORDER TO ACCOMMODATE INLET AND OUTLET PIPES.
- FOR CASES WHERE THE OUTLET PIPE DIAMETER IS LARGER THAN THE INLET PIPE DIAMETER, A MINIMUM 22 INCH DEPTH SHALL BE MAINTAINED ABOVE THE OUTLET PIPE.
- SEE STANDARD DRAWING D-CBB-42 FOR DETAILS REGARDING CAST IRON GRATES.
- PAY DEPTH MEASUREMENT MADE FROM TOP OF GRATE TO OUTLET FLOW ELEVATION. PAYMENT FOR CATCH BASIN WILL BE MADE UNDER ITEM NUMBERS 611-43.01 CATCH BASINS, TYPE 43, 0'-4' DEPTH THROUGH 611-43.05, CATCH BASINS, TYPE 43, > 16'-20' DEPTH PER EACH. PAYMENT INCLUDES GRATES.

REINFORCING STEEL LEGEND			
A500	60"	A504	13"
A501	108"	A505	10"
A502	34"	A506	12"
A503	VARIABLE		
A300	94"		
A301	48"		

12"	101 1/4"	26"
53 1/4"	L500	102 1/2"
12"	104 1/4"	6" MIN.
56 1/4"	L700	101 1/4"
12"	104 1/4"	6" MIN.
56 1/4"		53 1/4" MAX.

26"	54 1/2"	26"
5 3/4" MAX.	6" MIN.	5 3/4" MAX.

DIMENSIONS SHOWN ON THIS LEGEND ARE OUTSIDE TO OUTSIDE OF BAR. STANDARD C.R.S.I. HOOK AND TIE DETAILS SHALL APPLY, EXCEPT AS NOTED.

NOT TO SCALE

STATE OF TENNESSEE  
DEPARTMENT OF TRANSPORTATION

**STANDARD 8' X 4' RECTANGULAR CONCRETE NO.43SB CATCH BASIN**

10-26-97 D-CB-43SB